



EMax Plus Microplate Reader

Visible Absorbance Reader

Benefits

- 8 filters come standard to cover wide range of applications
- Compact footprint
- Pre-defined protocols with SoftMax® Pro Software
- Walk-up useability

The EMax® Plus Microplate Reader is designed to be a versatile and robust microplate reader for research laboratories. Eight filter modes enable applications such as protein quantification, cell viability and ELISA. The EMax Plus measures flat and round 96-well microplates. Accurate measurements are ensured by automatic lamp calibration prior to each reading. SoftMax® Pro Microplate Data Analysis Software provides integrated instrument control and data analysis. SoftMax Pro Software, data can be visualized as gray scale, kinetic plots or reaction rates. Powerful curve fitting protocols and statistical analysis are included.

Filter Modes

| Assay | Filter |
|----------------------|--------|
| Bradford | 595 nm |
| BCA | 562 nm |
| Lowry | 650 nm |
| MTT | 570 nm |
| XTT | 492 nm |
| Cell density | 620 nm |
| PNPP | 405 nm |
| OPD | 492 nm |
| TMB | 450 nm |
| Reference wavelength | 620 nm |

Eight filter modes for a variety of applications.

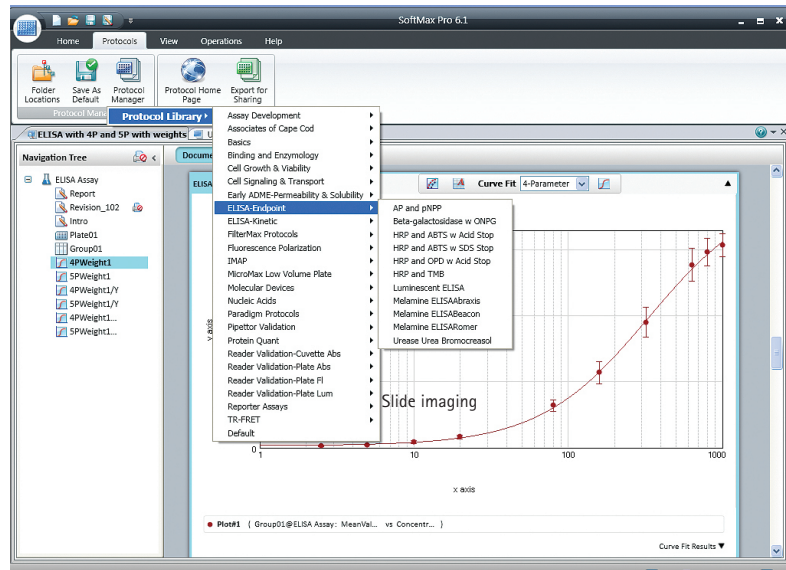
The Power of SoftMax Pro Software

Simple setup

SoftMax Pro Software simplifies setting up your assays by providing:

- Automatic instrument recognition
- Predefined protocols including those for endpoint and kinetic ELISA as well as for protein quantification such as BCS, Bradford, Lowry, DC protein and NanoOrange
- A wide variety of scan types: Endpoint, Kinetic, Spectral Scanning, and Well Scanning
- Standard data reduction settings are preselected as default
- Automatic data recovery feature
- Contemporary user community enabling protocol exchange and expertise sharing among our numerous users

Select ready-to-read protocols

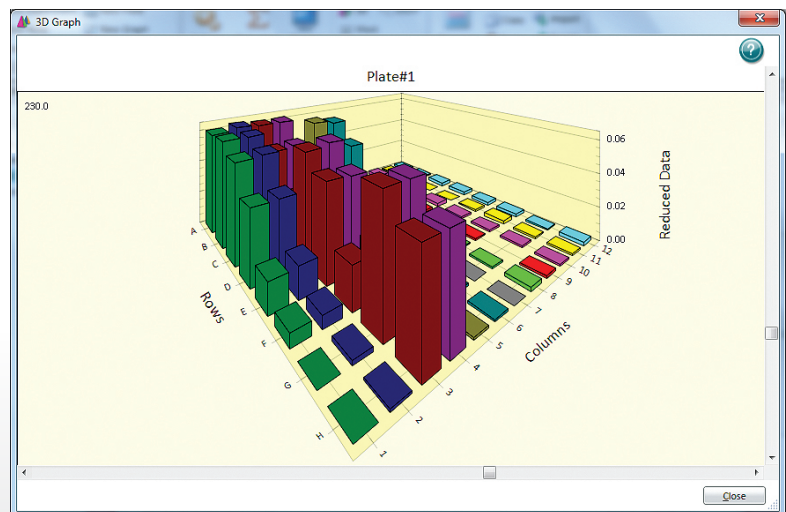


Customizing options

SoftMax Pro 6 Software offers a variety of customizing options:

- Predefined calculation options for common data analysis functions
- Easy export to Microsoft Excel
- Instrument settings and plate read area can be adjusted to suit your experiment's needs
- Custom data reduction settings can be selected for optimal signal selection
- Full reports, with font flexibility, and live mini-tables and graphs are now available within the Notes section to simplify the result sharing experience

See the results

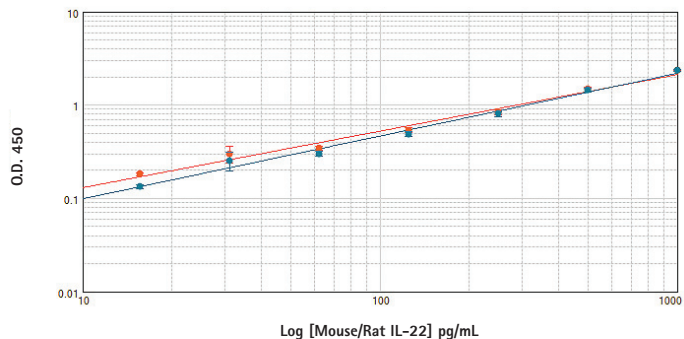


SoftMax Pro Software offers multiple ways to view your data including color and 3-D mapping.

Mouse/Rat IL-22 Quantikine ELISA comparing EMax Plus

A Mouse/Rat IL-22 Quantikine ELISA from R&D systems was used to compare performance of the EMax Plus and the EMax absorbance plate readers. An IL-22 standard curve was prepared and a sandwich ELISA performed using the MultiWash+ plate washer in strip mode to wash the wells. After reading the ELISA plate on both readers, each standard curve was nearly identical. A control well was set up to verify the accuracy of the standard curve. In the case of both readers, the standard was within the range described with the kit (data not shown).

Absorbance Reader Comparison: ELISA Assay



Ordering information

- EMax Plus Microplate Reader
Part Number: EMAX PLUS
- Spare Lamp
Part Number: 5032335

Technical Specifications

| | |
|---------------------------|---|
| Lamp Source | Tungsten halogen |
| Measurement Range | 0–3.3 OD |
| Reproducibility/Precision | 0.25% at 1.0 OD at 450 nm |
| Accuracy | 0.5% at 1.0 OD at 450 nm |
| Standard Filters | 405, 450, 492, 562, 570, 595, 620, and 650 nm |
| Wavelength Selection | Filters |
| Wavelength Range | 400–750nm |
| Plate Types | flat and round 96-well plates |
| Data Output | Export to PC |
| Detection System | Single channel silicon photodiode |
| Reading Speed | 25 seconds |
| Software | SoftMax Pro Software |
| Shaking | None |
| Temperature Control | None |
| Linearity | 0.25% and 0.0025 OD from 0.1 –2.5 OD at 492 nm |
| Computer Interface | USB 2.0 |
| Optical System | Filters |
| Power Requirement | External power supply: 100–240VAC; current rating 50/60 Hz, 1.5 A |
| Dimensions (WxDxH) | 31.5 x 18.2 x 43.5 cm |
| Weight | 6.6 kg |
| Mode of Operation | PC Control |

Contact Us

Phone: +1-800-635-5577
 Web: www.moleculardevices.com
 Email: info@moldev.com

Check our website for a current listing of worldwide distributors.

Regional Offices

USA and Canada +1-800-635-5577
 Brazil +55-11-3616-6607
 China (Beijing) +86-10-6410-8669
 China (Shanghai) +86-21-3372-1088
 Germany 00800-665-32860

Japan (Osaka) +81-6-7174-8831
 Japan (Tokyo) +81-3-6362-5260
 South Korea +82-2-3471-9531
 United Kingdom +44-118-944-8000

